



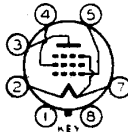
1A5-GT/1A5-G

1A5-GT



POWER AMPLIFIER PENTODE

Filament	Coated	
Voltage	1.4	d-c volts
Current	0.05	amp.
Maximum Overall Length		3-5/16"
Maximum Seated Height		2-3/4"
Maximum Diameter		1-5/16"
Bulb		T-9
Base	Intermediate Shell Octal 7-Pin	
Pin 1 - No Connection		Pin 5 - Grid
Pin 2 - Filament +		Pin 7 - Filament -
Pin 3 - Plate		Pin 8 - No Connection
Pin 4 - Screen		
Mounting Position		Any



BOTTOM VIEW (G-6X)

AMPLIFIER

Plate Voltage	110 max.	volts
Screen Voltage	110 max.	volts
Total Zero-Sig. Cathode Current	6 max.	ma.

Typical Operation and Characteristics - Class A₁ Amplifier:

Plate	85	90	volts
Screen	85	90	volts
Grid *	-4.5	-4.5	volts
Peak A-F Grid Volt.	4.5	4.5	volts
Zero-Sig. Plate Cur.	3.5	4.0	ma.
Max.-Sig. Plate Cur.	3.5	4.0	ma.
Zero-Sig. Screen Cur.	0.7	0.8	ma.
Max.-Sig. Screen Cur.	1.0	1.1	ma.
Plate Res.	0.3	0.3	approx. ohms
Transcond.	800	850	μmhos
Load Res.	25000	25000	ohms
Total Harmonic Dist.	10	7	%
Max.-Sig. Power Output	100	115	mw

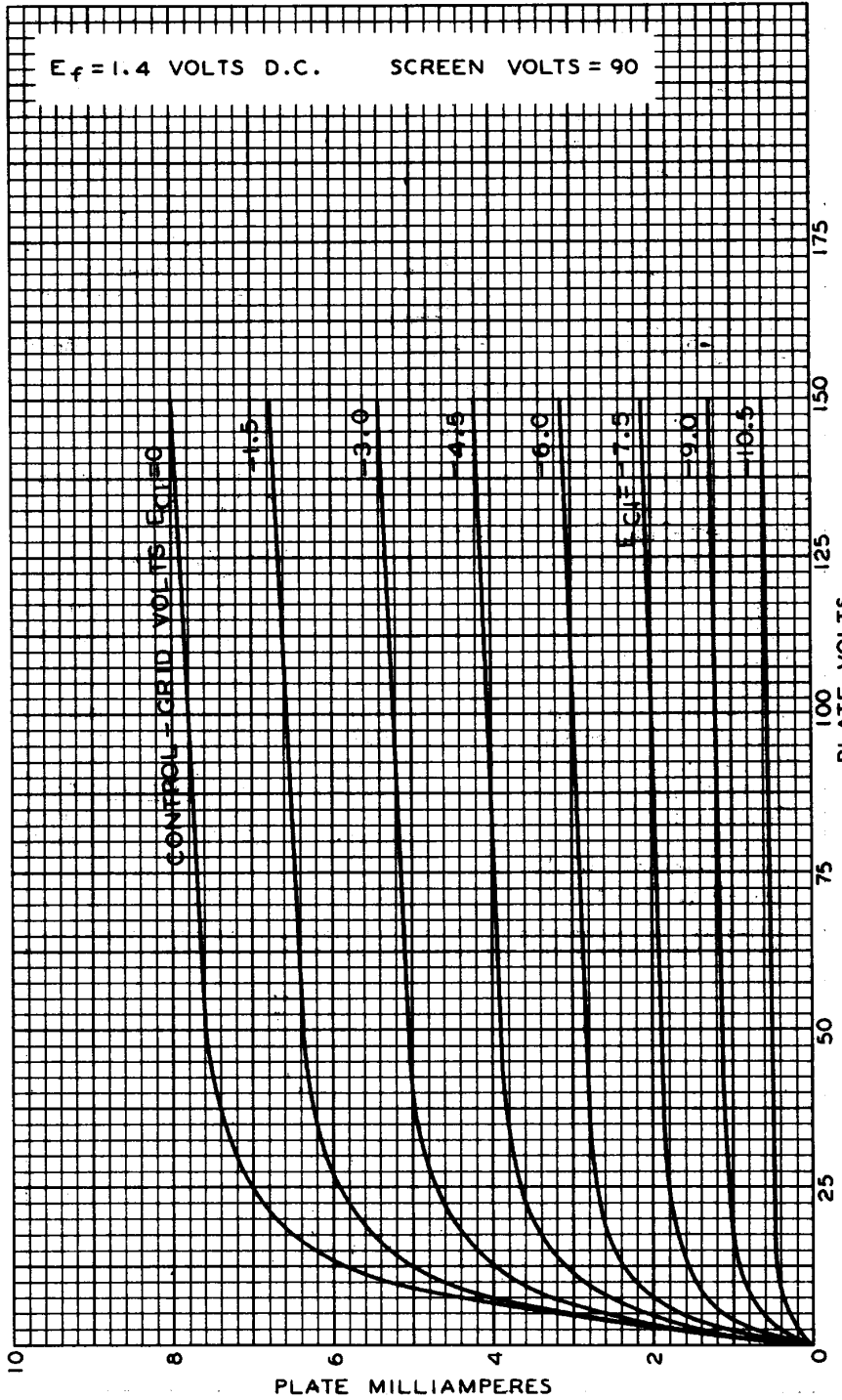
* Self-bias is recommended so that grid bias will be proportionately less as the B-supply voltage falls off during battery life.

1A5-GT



1A5-GT

AVERAGE PLATE CHARACTERISTICS



NOV. 10, 1938

RCA RADIOTRON DIVISION
RCA MANUFACTURING COMPANY, INC.

92C-4998