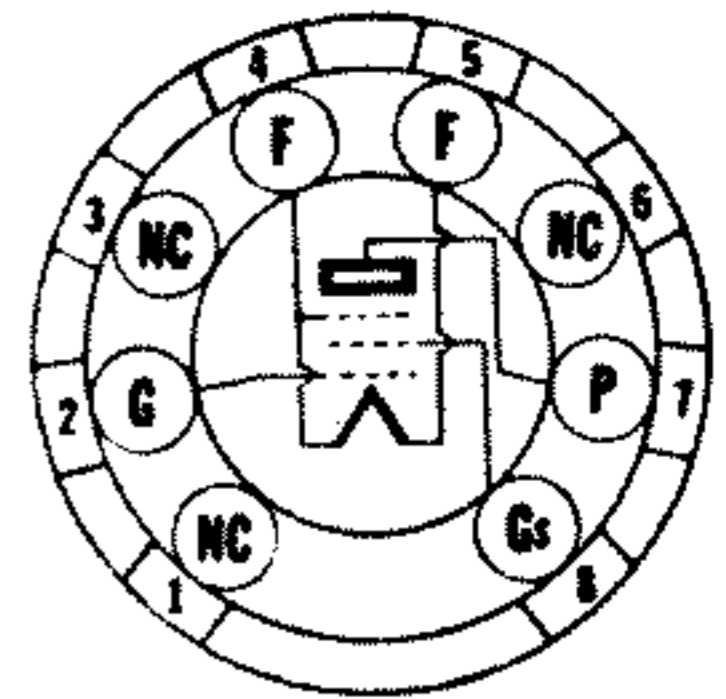


# 1W5 Sylvania Type

## SHARP CUT-OFF RF PENTODE



8CP-0-0

### PHYSICAL SPECIFICATIONS

Base.....	Flexible Leads
Bulb.....	T-3
Minimum Lead Length.....	1 1/4"
Maximum Bulb Length.....	1 1/2"
Mounting Position.....	Any

### RATINGS

Filament Voltage DC.....	1.25 Volts
Maximum Plate Voltage.....	100 Volts
Maximum Screen Current.....	100 Volts

#### Direct Interelectrode Capacitances

	Unshielded	Shielded*
Grid to Plate.....	.012	.01 $\mu$ f. Max.
Input.....	2.2	2.3 $\mu$ f.
Output.....	3.4	3.5 $\mu$ f.

\*With 0.405" diameter shield connected to negative filament. Leads numbering 1, 3 and 6 must be grounded to obtain these values.

### TYPICAL OPERATION

Filament Voltage DC.....	1.25	1.25 Volts
Filament Current.....	.040	.040 Ampere
Plate Voltage.....	30	67.5 Volts
Screen Voltage.....	30	67.5 Volts
Grid Voltage.....	0	0 Volts
Plate Current.....	0.42	1.85 Ma.
Screen Current.....	0.16	0.75 Ma.
Plate Resistance (Approx.).....	0.7	0.7 Megohm
Mutual Conductance.....	430	735 $\mu$ mhos
Control Grid Voltage for $I_b = 10 \mu$ a. (Approx.).....	-2.0	-5.0 Volts

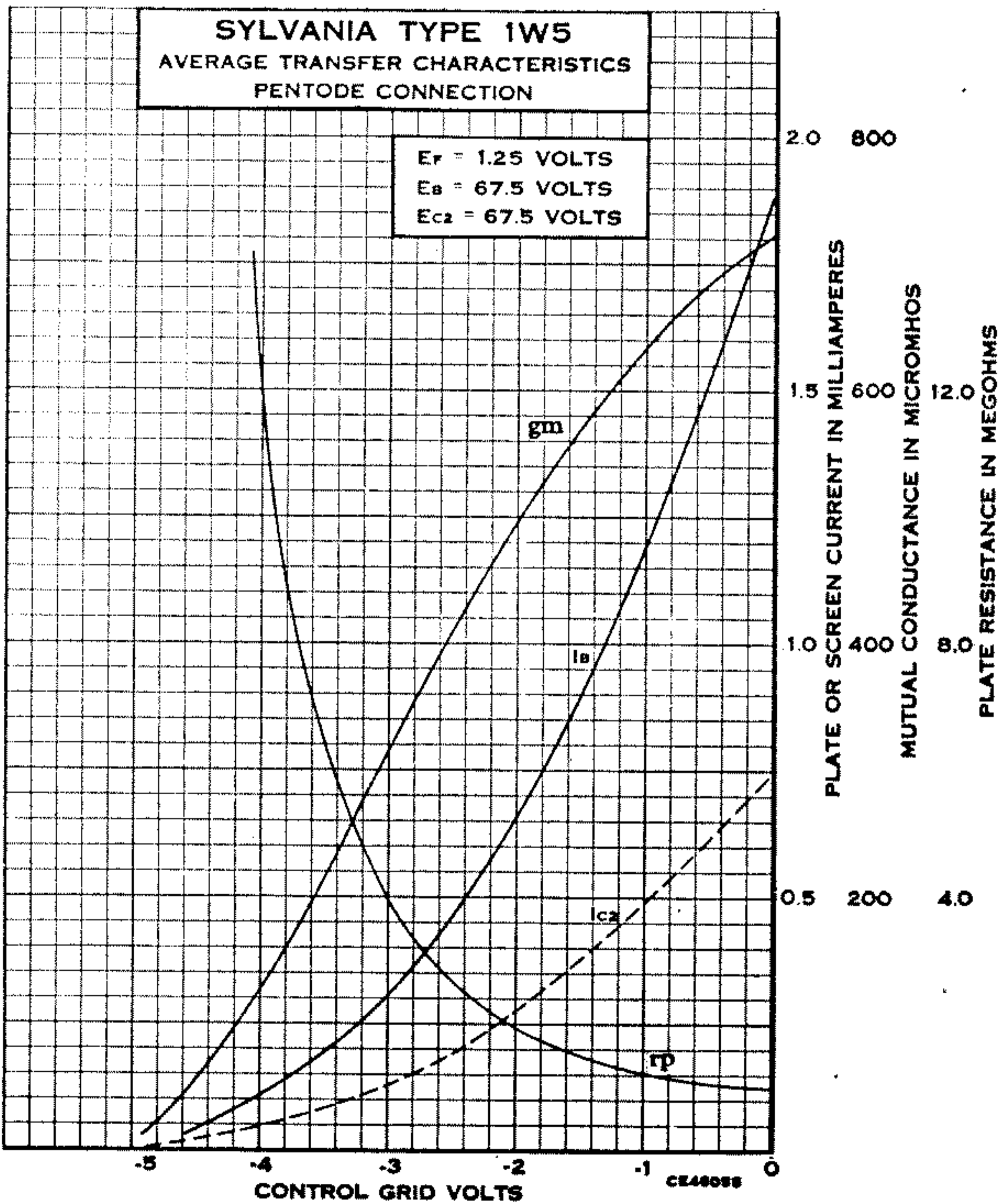
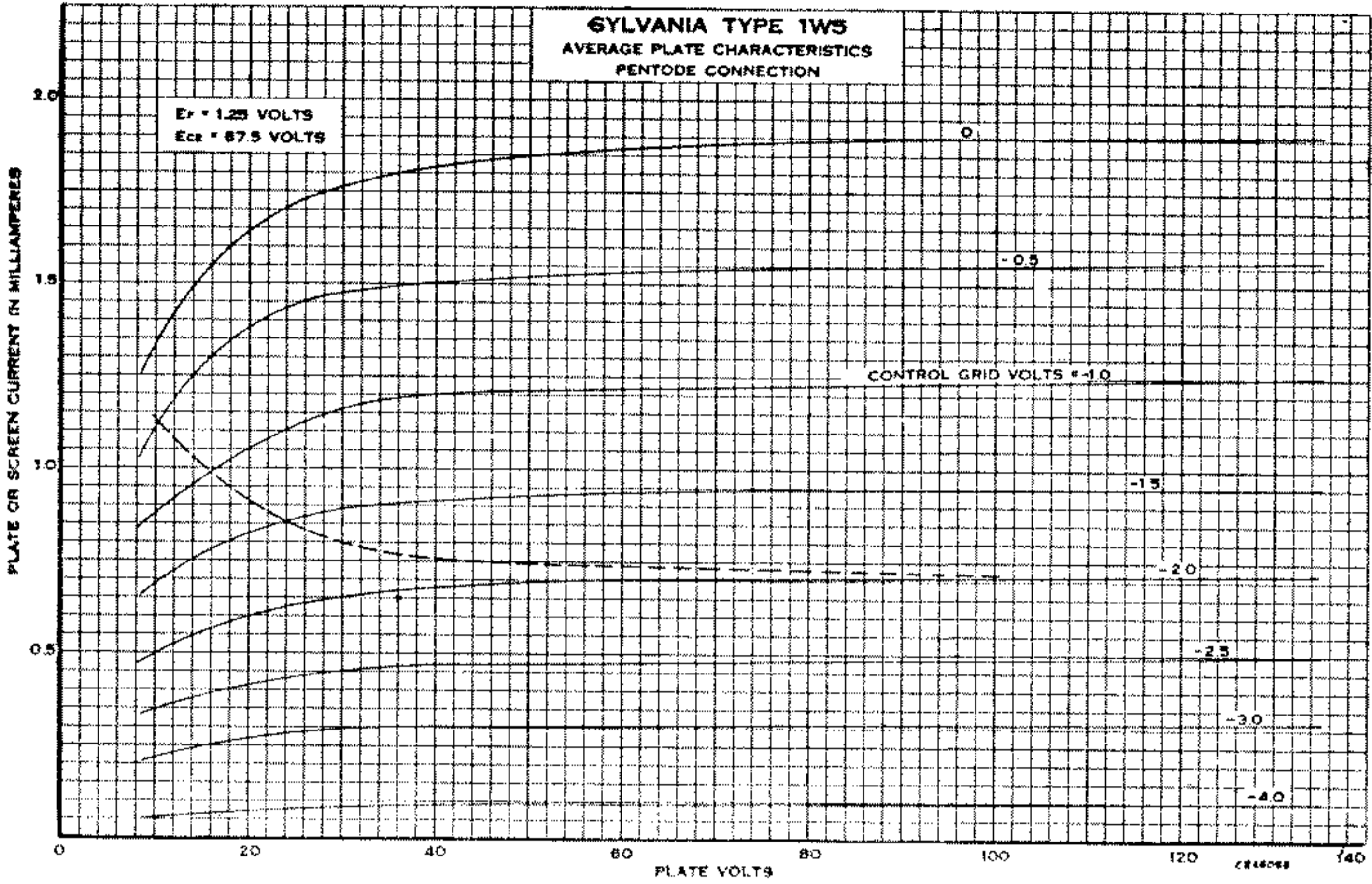
### APPLICATION

Sylvania Type 1W5 is an RF Pentode tube suitable for use in very small sets or amplifiers. The other types required for a normal set complement and designed for use with it are Types 1C8 (Converter), 1Q6 (Diode Pentode) and 1V5 (Output Pentode).

This type corresponds in service and circuit design to Type 1LN5 and will operate satisfactorily with standard radio components.

When used on battery supply the filament voltage must never exceed 1.5 volts. For AC-DC power line operation, the design center is 1.2 volts.

The tinned leads permit direct soldering into the circuit to permit great reduction in size of completed equipment, or may be cut off for use in a socket designed for this purpose. The small size and light weight permit use under severe mechanical conditions and in locations where larger tubes could not be considered.



## SYLVANIA RADIO TUBES

Issued as a supplement to the manual in Sylvania News for Nov.-Dec. 1947

# 1W5 (Cont.)

